

# National Research Project on Automated Driving to realize Society 5.0 - SIP-adus in Japan -

FUKUSHIMA Chie  
Director for SIP-adus  
Cabinet Office, Government of Japan

SIP ; Strategic Innovation Promotion Program    adus ; Automated driving for universal services

Organised by

Co - Organised by

Supported by

Hosted by



Federal Ministry  
of Transport and  
Digital Infrastructure



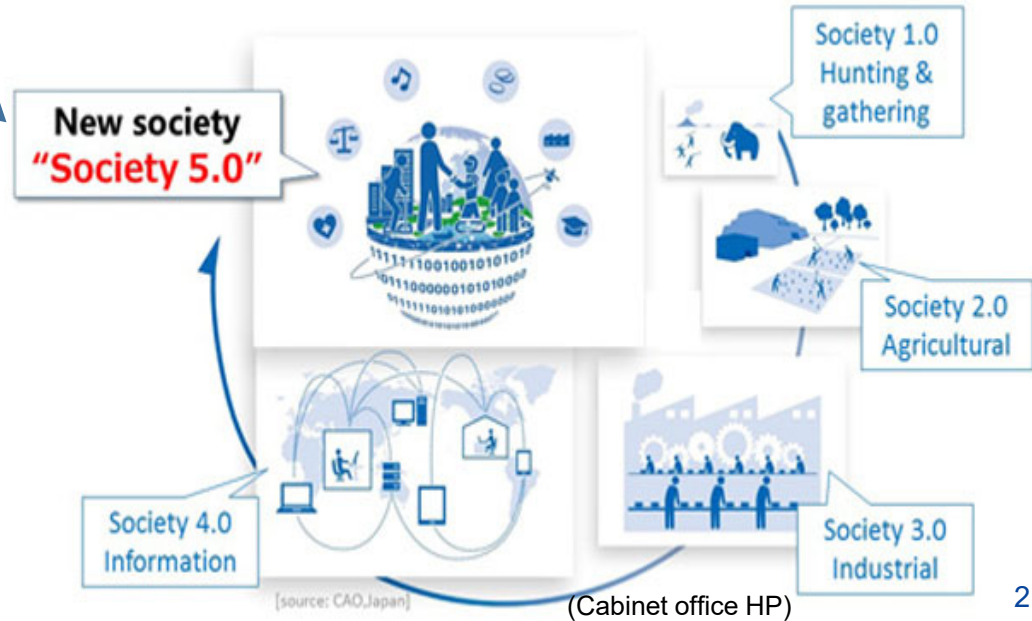
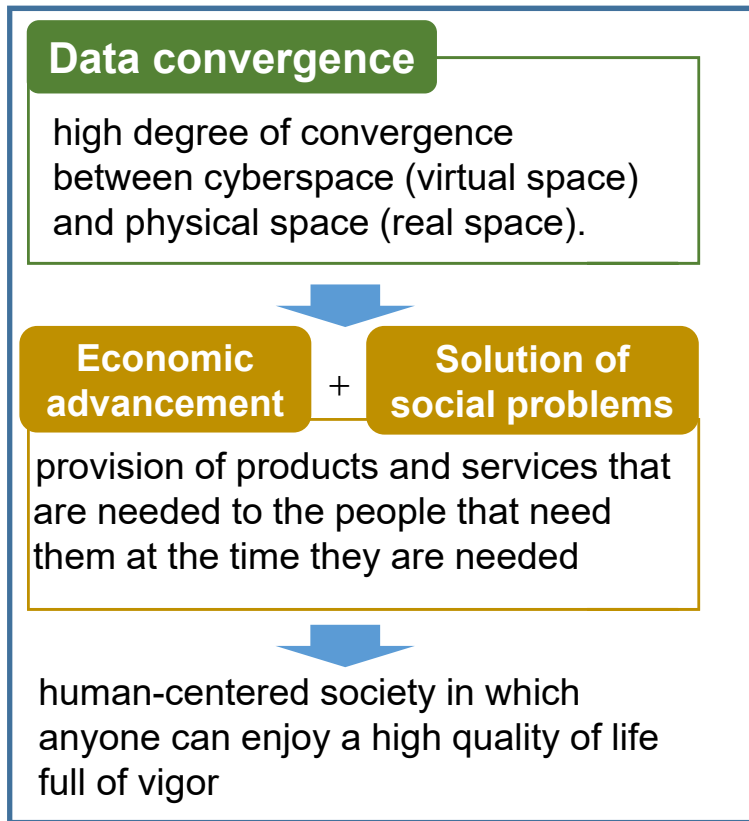
# Society 5.0

 **S**trategic **I**nnovation Promotion **P**rogram

SIP 2<sup>nd</sup> FY2018~FY2022



12 themes on going (SIP-adus is one of them)  
adus ; Automated driving for universal services



# Outline of SIP

- **Intensive R&D program**
  - ✓ promote 5-year R&D (FY2018 - FY2022)
  - ✓ from fundamental research to social implementation and commercialization
- **Promote cross-sector collaboration**
  - ✓ enhancing cross-ministerial cooperation
  - ✓ promote industry-academia-government collaboration
- **Leadership and total Budget**
  - ✓ CSTI appointed Program Directors and allocates the budget for each research theme.\*

\* ¥28bil in total per year for SIP 12 themes



Cross-ministerial Strategic Innovation Promotion Program

Council for Science, Technology, and Innovation

Governing Board  
(CSTI Executive Members)

Executive Director of SIP (Assigned from 2018)

Program Director (PD)  
(assigned to Cabinet Office for each policy issue)

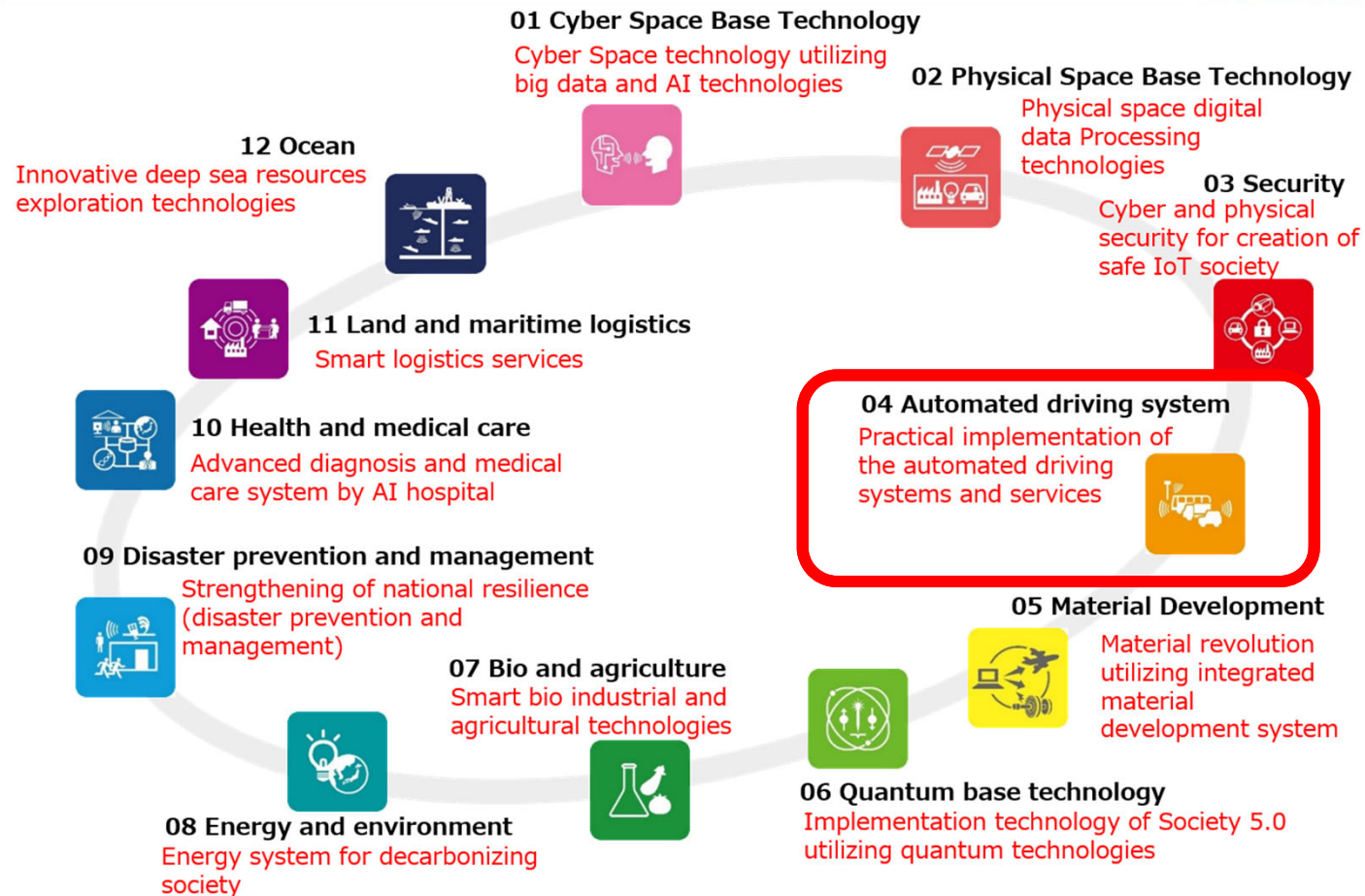
Steering Committee

PD (Chairman), relevant ministries,  
experts, management agency,  
Cabinet Office (secretariat)

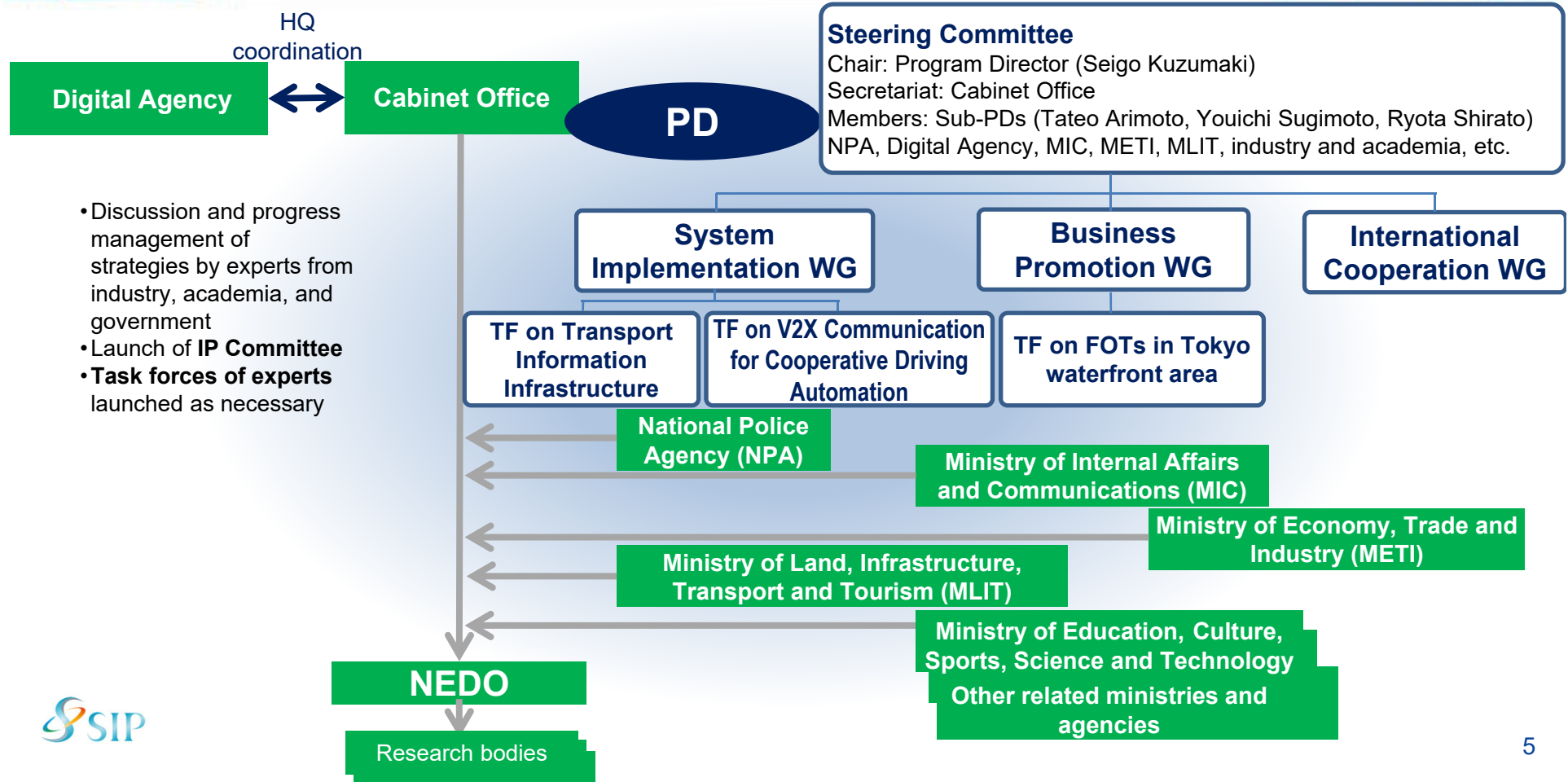
Related governmental research institutes,  
Universities, private companies, etc.



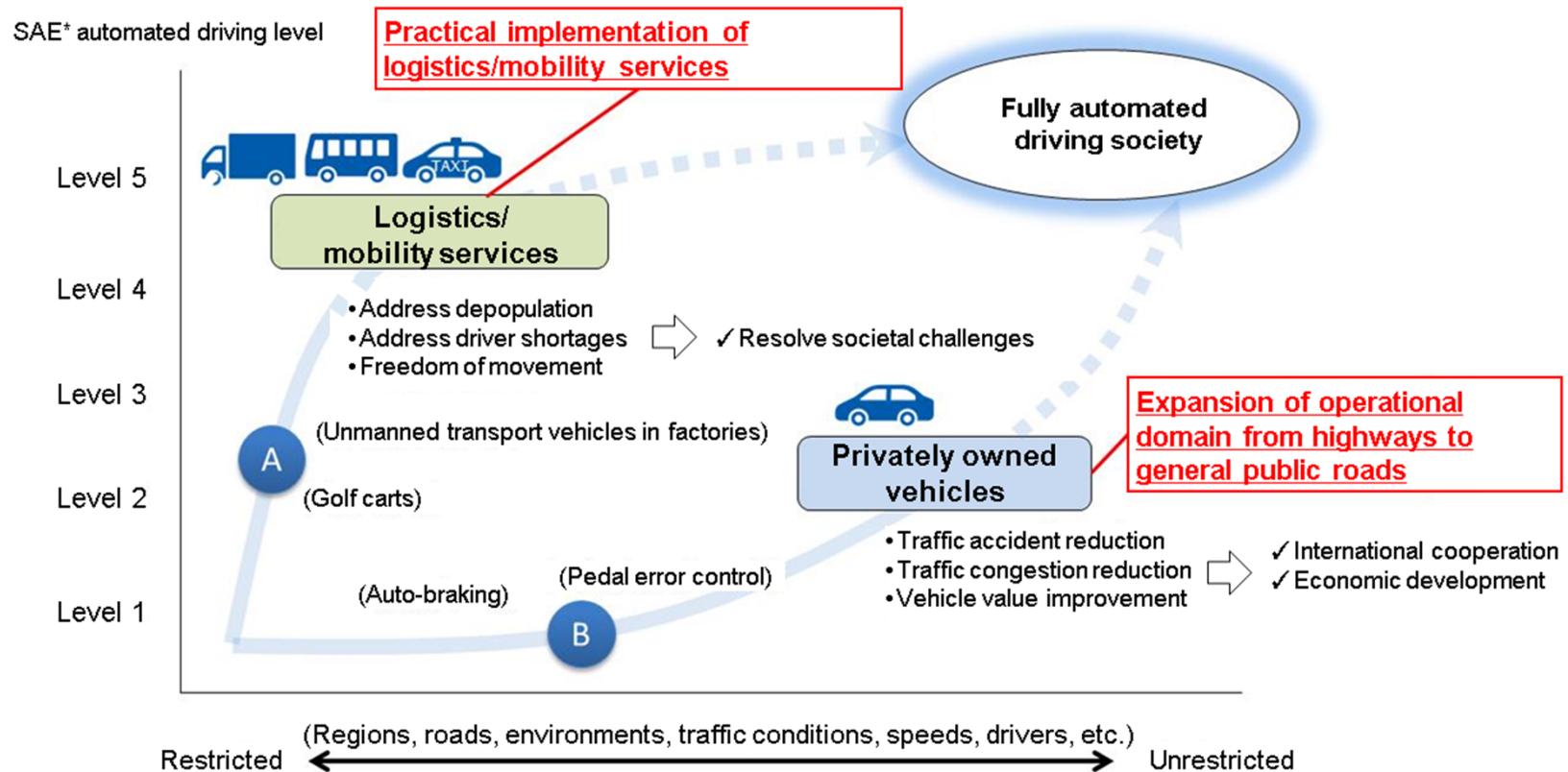
# 2nd phase of SIP (FY2018-2022) - 12 Programs



# Promoting structure of SIP-adus

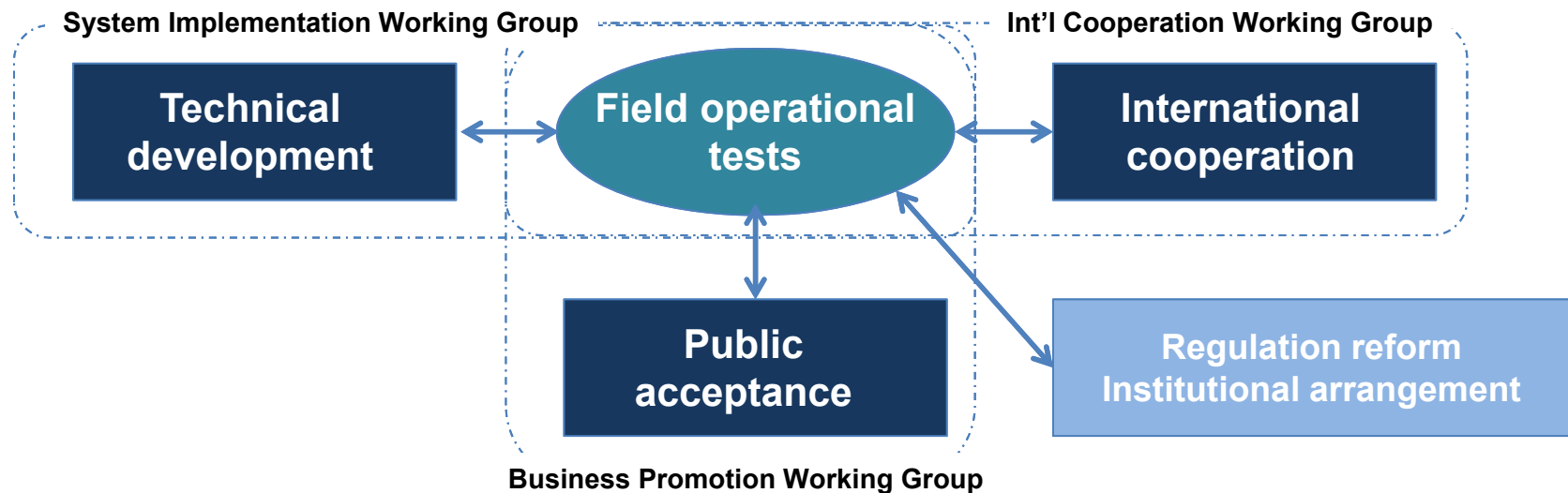


# Overview of 2nd Phase of SIP-adus



# Focus themes

## 【4 pillars】

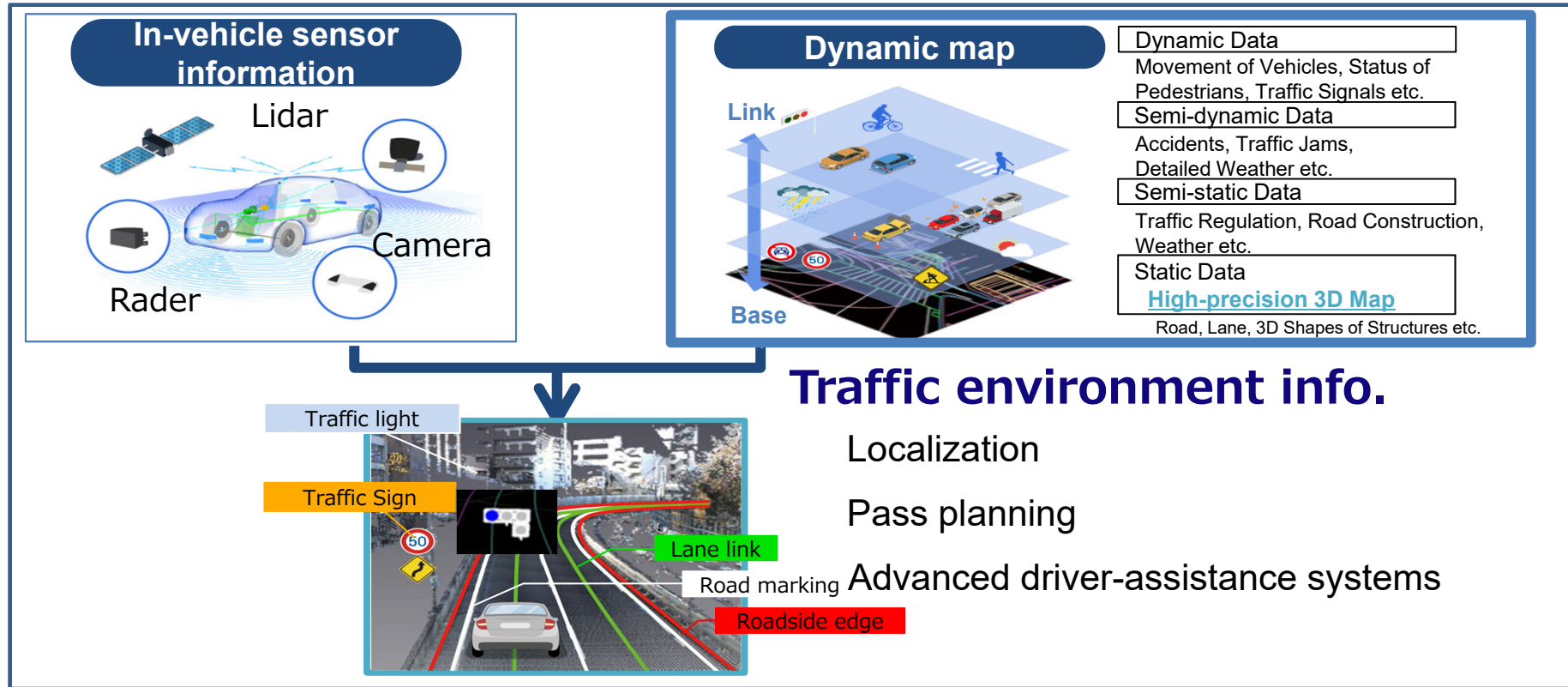


## 【Focus themes】

- ( I ) Traffic environment information (Dynamic map)
- ( II ) Traffic environment data portal
- ( III ) Virtual validation platform for ADS safety assurance
- ( IV ) Evaluation methodology of Intrusion detection system

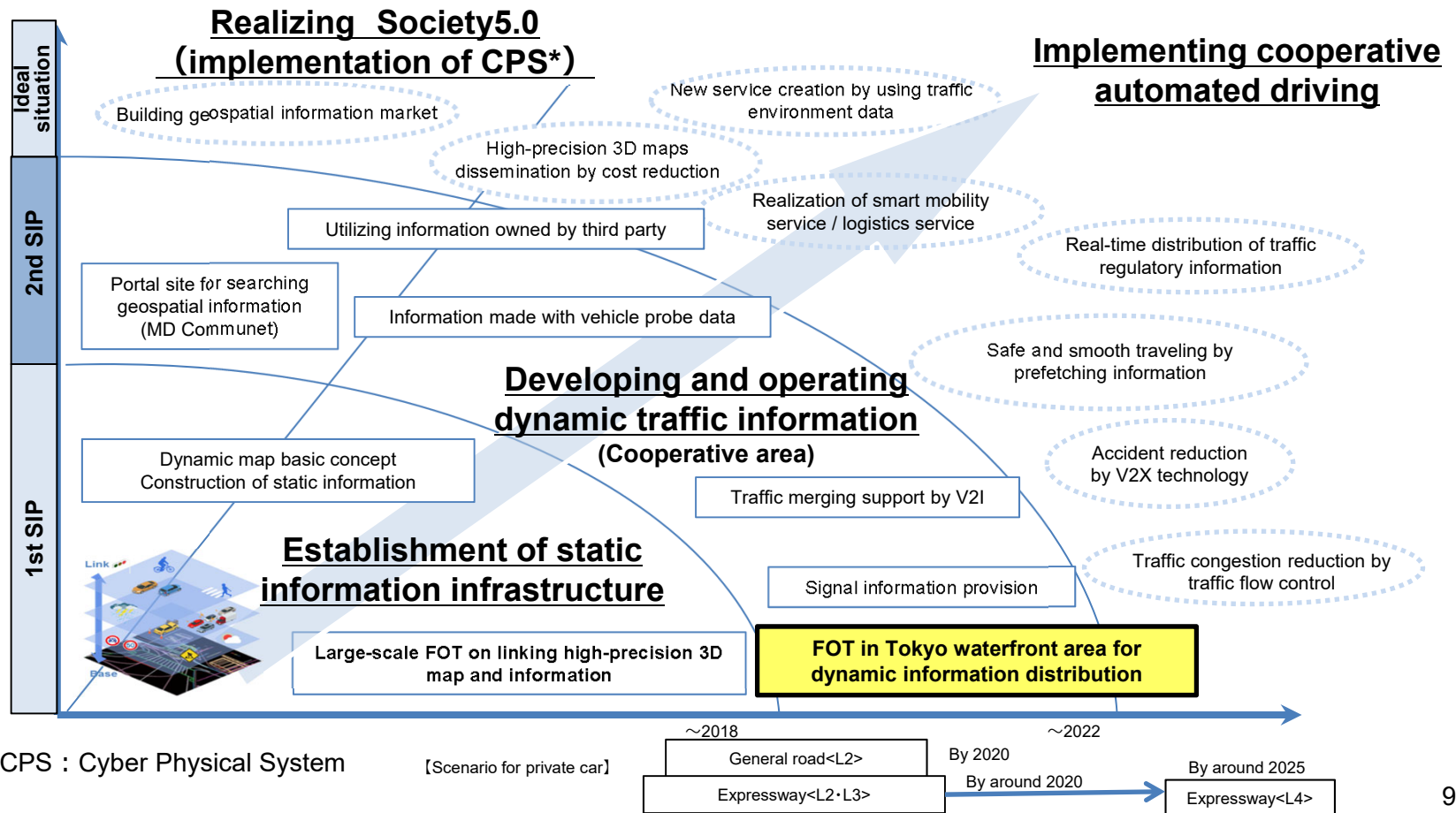
# Dynamic map

## Structure of ADS





# Building the Traffic Environment Info. Framework



# FOTs in Tokyo waterfront area

- Promoting standardization in an internationally open experimental environment under public roads and mixed traffic
- Promoting R&D by drawing out private investment through a matching fund format with industry-academia-government collaboration



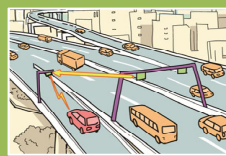
## (a) Tokyo Waterfront City area

- Signal display and change timing information via ITS infrastructure
- High-precision 3D map linked with signal info. etc



## (b) Haneda Airport area

- Signal display and change timing information via ITS infrastructure
- Magnetic marker
- Bus stop, designated lane for bus service



## (c) Metropolitan Expressway

- Merging assistance at main lanes of expressway
- ETC gate open/close info.
- Lane level traffic flow regulation info. etc.

- ◆ From this Fall, FOT will be expanded to provide **dynamic traffic information from a wide area** of infrastructure via **V2N** with the aim of further expanding the operational design domain (ODD) of ADV and mobility / logistics services.

# Participants of FOT in Tokyo waterfront area

- 22 institutions including domestic and foreign automobile manufacturers, auto parts suppliers, universities, start-ups and others



※As of July 2021

Alphabetical order. A total of 22 institutions

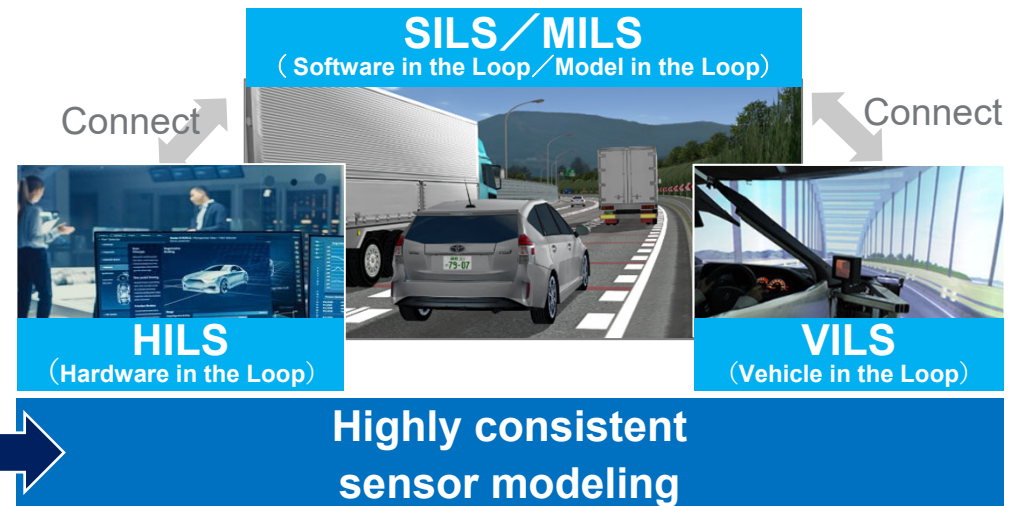
# Safety Assurance

- Developing a simulation platform that replaces real vehicle evaluations with sensor modelling that is highly consistent with real phenomena, in order to perform reproducible safety evaluations of automated driving in various traffic environments.

## Real experimental test



## Virtual test



# Simulation evaluation of Tokyo waterfront area

## ➤ Build Odaiba Virtual-PG environment

- ✓ **Modeling of FOTs in Tokyo waterfront area**
- ✓ Model building of traffic participants  
(3D model) pedestrian/bicycle/vehicle etc.
- ✓ **Reproduction of weather conditions**  
(sunlight, rain, nighttime)

## ➤ Evaluate tool usability and simulation results

- ✓ Evaluation of scenario setting tool including traffic participants
- ✓ Comparative evaluation of sensor detection data and simulation



# International cooperation

## (1) Japan-Germany research cooperation



“Human Factors”



“Impact Assessment”



“Safety Assurance”



“Cybersecurity”

## (2) Japan-EU research cooperation



i) HEADSTART - SAKURA/SIP-adus (Safety Assurance)



- Agreed to develop joint white paper

ii) HADRIAN - SIP-adus Human Factors (Human Factors)



- Regular meeting to exchange the information

iii) SHOW - ITS Japan/UTmobl (Automated mobility services)



- Signing MOU in October



# SIP-adus Workshop 2021



- ✓ **Date : November 09-10, 2021**
- ✓ **Format : Virtual conference**

✓ All sessions will be streamed online, additionally streamed in Central European Time and Eastern Standard Time for worldwide participants.

## Plenary Session(provisional)

as of September 9

	November 09 (start at 9:00)	November 10 (start at 9:00)
<b>AM</b> (JST)	<b>Opening / Regional Activities</b>	<b>Dynamic Map</b>
	<b>Impact Assessment</b>	<b>Connected Vehicles</b>
<b>PM</b> (JST)	<b>Service and Business Implementation / FOTs + Human Factors (Joint Session)</b>	<b>Safety Assurance</b>
	<b>Japanese Government</b>	<b>Cybersecurity</b>
		<b>Closing</b>
For European Region	start at 9:30(CET)/17:30(JST)	start at 9:30(CET)/17:30(JST)
For Americas	start at 11:00(EST)*1:00(JST)	start at 11:00(EST)*1:00(JST)



\* The time will be the next day

For further information, please visit our website <https://en.sip-adus.go.jp/evt/workshop2021/>



**Thank you**

**SIP-adus web site**  
<https://en.sip-adus.go.jp>