

SIP Automated driving systems

— Mobility bringing everyone a smile —

Nov.15

**Program Director
SEIGO KUZUMAKI**

Welcome to JAPAN

Welcome to SIP

Cross-ministerial Strategic Innovation Promotion Program



Outline of SIP

➤ Intensive R&D program

- ✓ promote 5-years R&D (FY2014 - FY2018)
- ✓ enhancing **cross-ministerial cooperation**

➤ 11 research themes

From societal issues such as Energy, Next-Generation Infrastructures and Local Resources, including R&D for AD



➤ Leadership and total Budget

CSTI appointed Program Directors and allocates the budget for each research theme. *

* ¥50bil in total per year

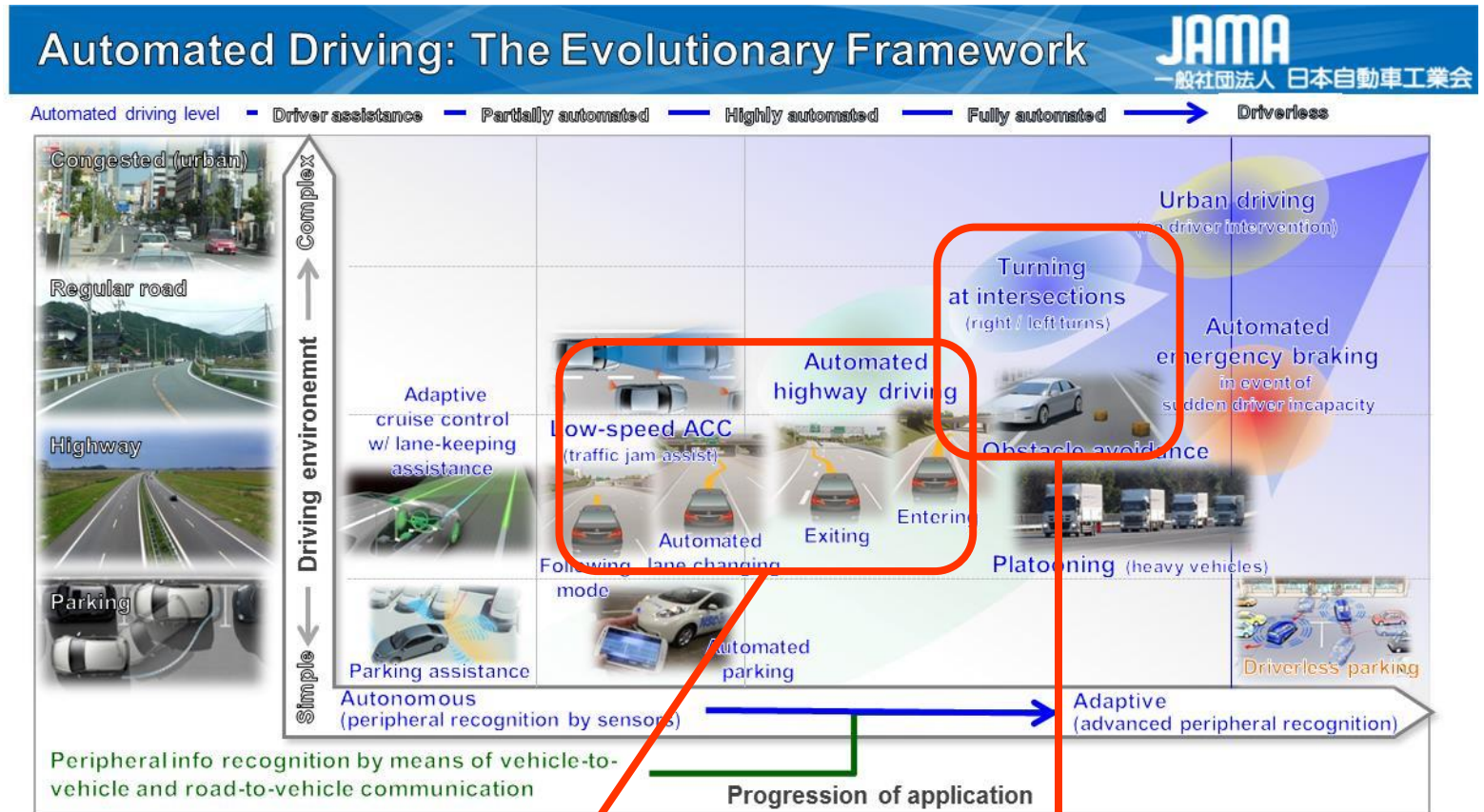
(65% for SIP 11 themes, 35% for medical R&D)

**Budget for SIP-adus :
JPY 2.7 Billion (FY2016)**

adus : Automated driving systems
for universal service

Goal & Exit Strategy

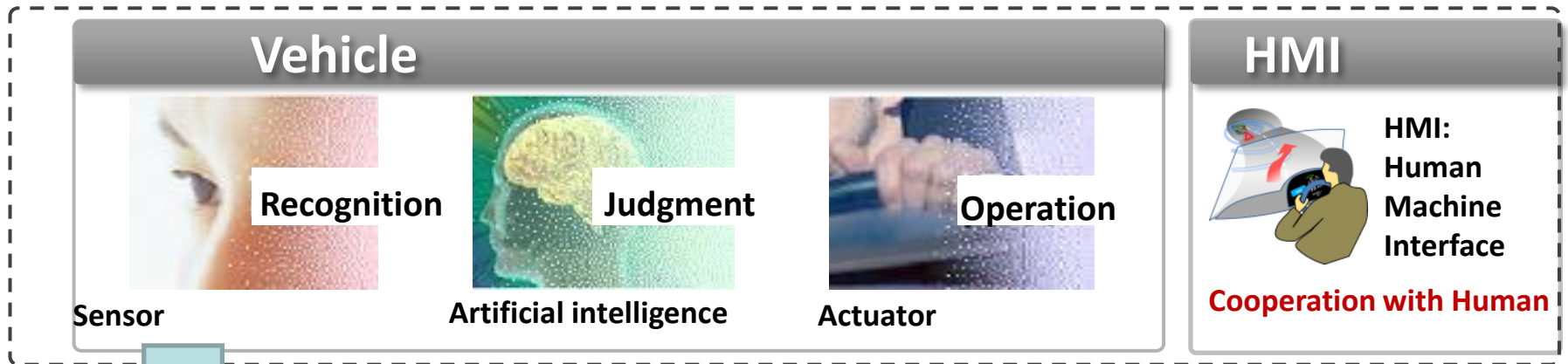
1. Ensuring safety and traffic jam reduction on the road
2. Realization and spread of Automated Driving System
3. Realization of advanced next generation public bus service for vulnerable people.



Realization of Level 2 on highway by 2020

Prioritization for next step Level 2 on regular road

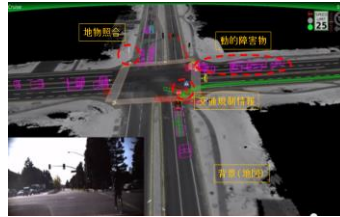
Technologies for Automated driving systems



- A highly self-position estimation
- Neighboring environmental cognition

These are important for Automated Driving System

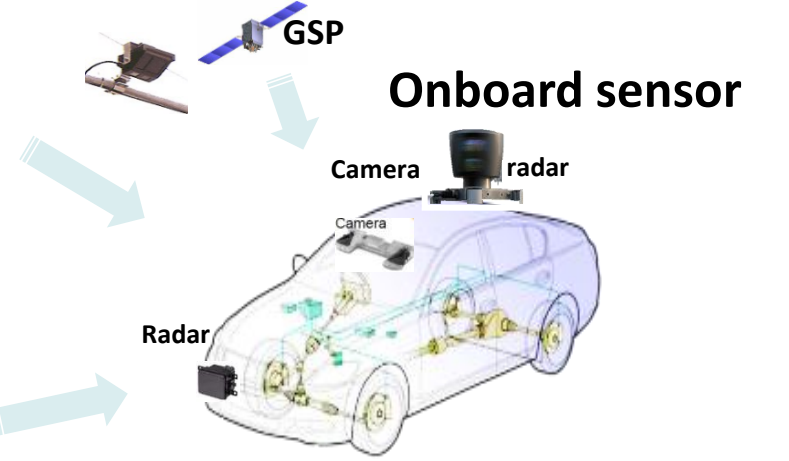
Dynamic Map



High-definition digital map



ITS Anticipative Information



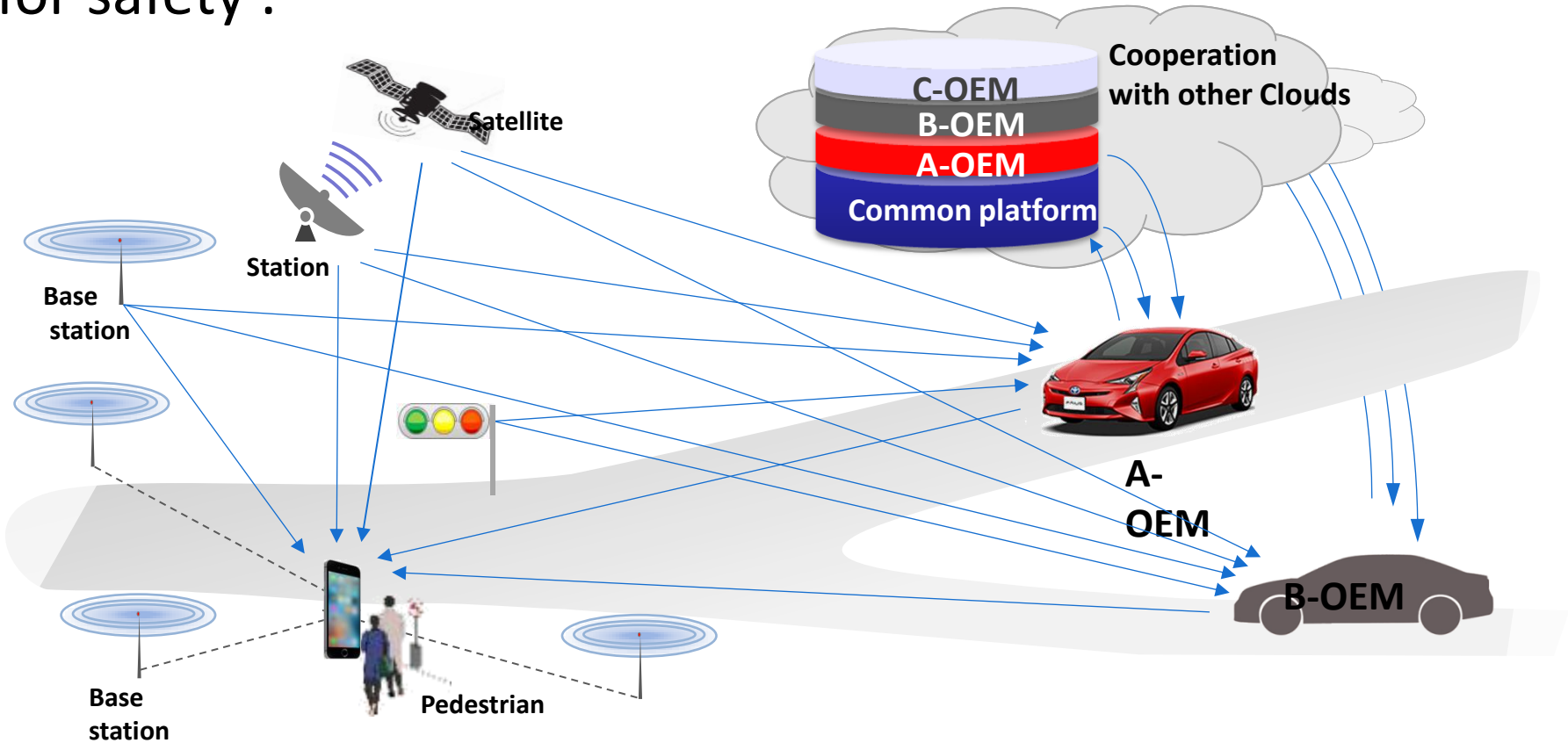
In red : Area of Cooperation ⇒ Main Area of SIP

Basic Tech. Security, Simulation, Database, etc.

SIP focus on the R&D in Cooperative area with Industry, Academia and Government

Harmonization

A common base platform (map, rule etc.) is necessary for safety .



International Harmonization/Standardization

International Cooperation focused Themes

- ✓ Dynamic Map
- ✓ Connected Vehicle
- ✓ Security
- ✓ Impact Assessment
- ✓ Human Factors
- ✓ Next Generation transport

Leading Experts at SIP-adus



Dynamic Map
Ryota Shirato



Connected Vehicles
Norifumi Ogawa



Human Factors
Satoshi Kitazaki

Good Discussion!
Good Communication!
Good Relationship!



Impact Assessment
Nobuyuki Uchida



Next Generation Transport
Masayuki Kawamoto



Security
Satoru Taniguchi

SEVEN SAMURAI



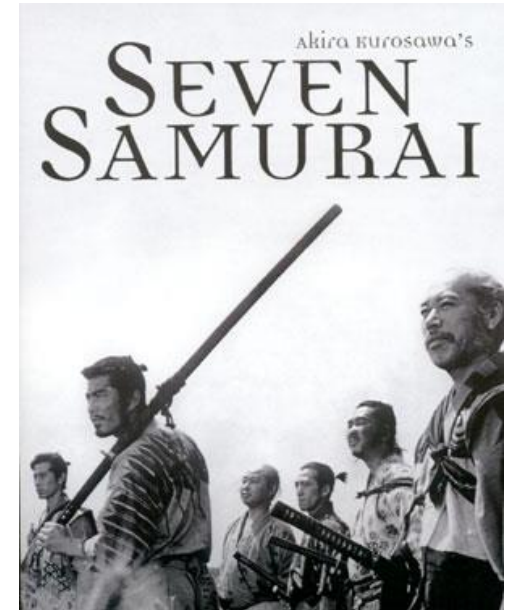
Dynamic Map
Ryota Shirato



Connected Vehicles
Norifumi Ogawa



Human Factors
Satoshi Kitazaki



Impact Assessment
Nobuyuki Uchida



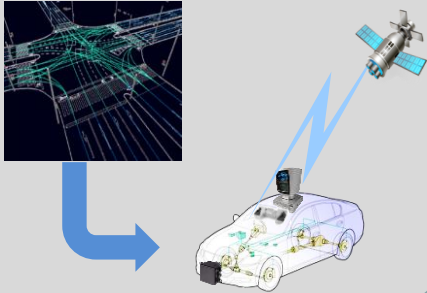
Next Generation Transport
Masayuki Kawamoto



Security
Satoru Taniguchi

Field Operational Test (FOT)

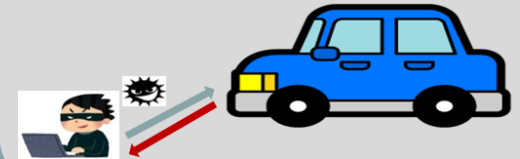
Dynamic map



HMI



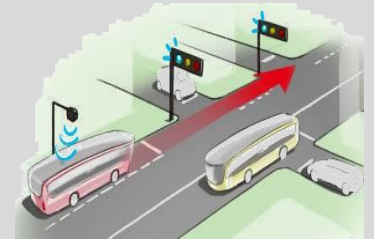
Information security



Social acceptability promotion event



Next generation urban transportation



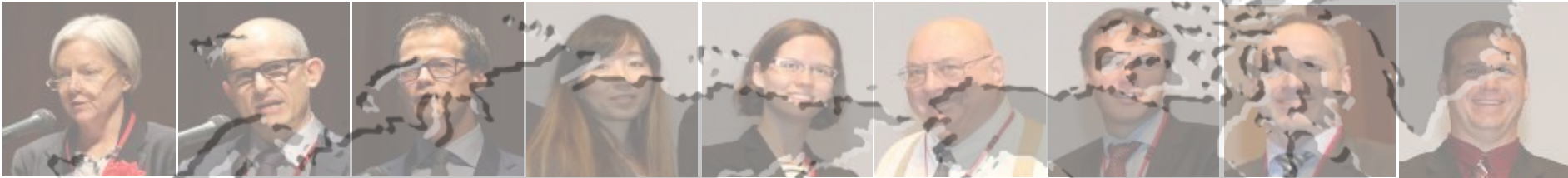
Pedestrian accident reduction



✓ SIP-adus will start FOT from around Sep.2017

Expansion of SIP-adus

Cross-ministerial



➡ **Cross-over**



➡ **Cross-border**



Enjoy your stay & discussion!

Mobility bringing everyone a smile!



Thank you for kind attention!