



# Adapt*://*Ve

*Automated Driving Applications and  
Technologies for Intelligent Vehicles*

*AdaptIVe  
Automated driving applications and  
technologies for intelligent vehicles*

Tokyo  
November 2016



## // Facts

Budget:	EUR 25 Million
European Commission:	EUR 14,3 Million
Duration:	42 months (January 2014 - June 2017)
Coordinator:	Aria Etemad, Volkswagen Group Research
8 Countries:	France, Germany, Greece, Italy, Spain, Sweden, The Netherlands, United Kingdom

Co-funded by the  
European Union under  
the 7th Framework  
Programme.



Supported by



# // 28 partners

**VOLKSWAGEN**  
AKTIENGESELLSCHAFT

**BMW  
GROUP**



**DAIMLER**



**VOLVO**

**PSA PEUGEOT CITROËN**



Wir leben Autos.



**BOSCH**  
Invented for life



**DELPHI**

**bast**



**DLR**  
Deutsches Zentrum  
für Luft- und Raumfahrt  
German Aerospace Center

**CHALMERS**



**LUND  
UNIVERSITY**



**ika** INSTITUT FÜR KRAFTFAHRZEUGE  
**RWTH AACHEN  
UNIVERSITY**

**TNO**



**UNIVERSITY  
OF TRENTO - Italy**

**UNIVERSITY OF LEEDS**

**wivw**

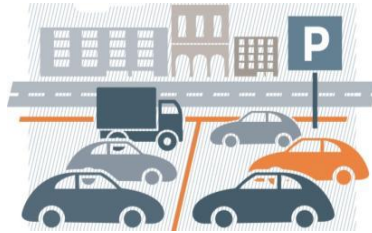
Julius-Maximilian  
**UNIVERSITÄT  
WÜRZBURG**

**alcor**  
consulenza *innovazione*

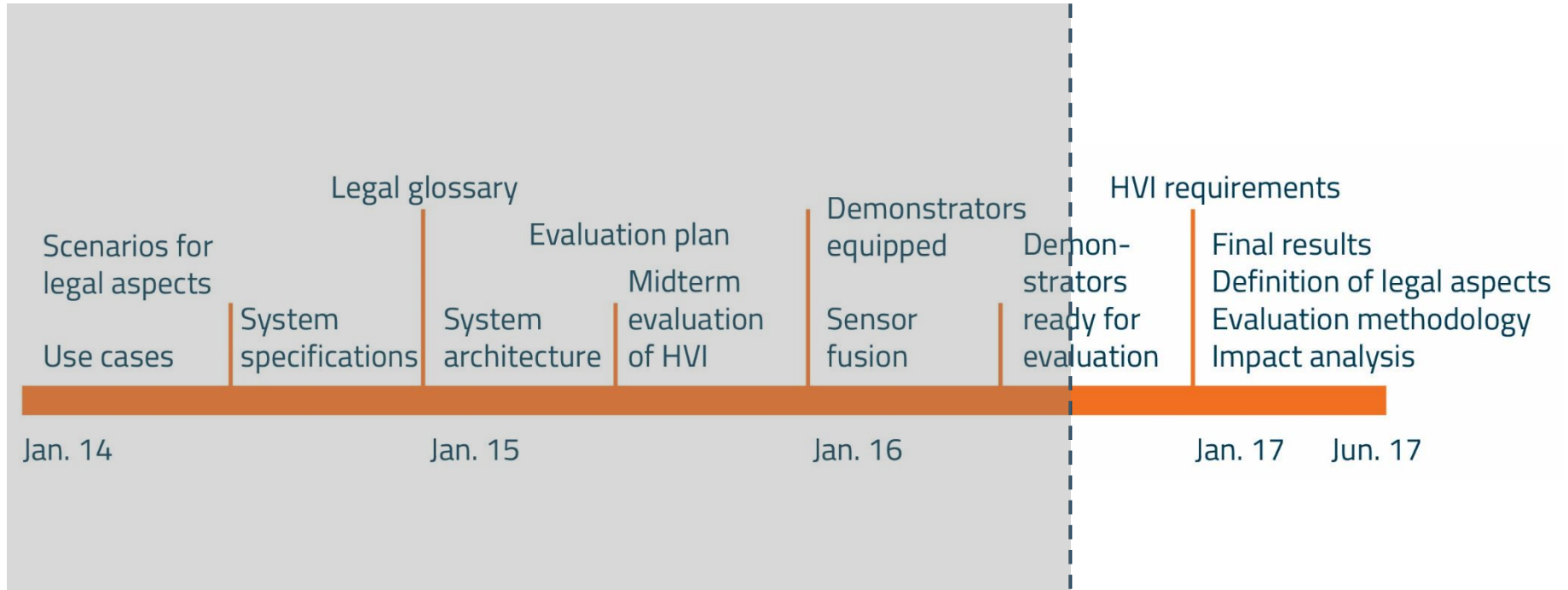
**eict**

# // Research activities

Widespread application of automated driving to improve traffic safety, efficiency and comfort



# // Timeline



# // Achievement - Legal Aspects



- **System Classification and Glossary**
- Systematic derivation of relevant system parameters for:
  - Vehicle
  - Driver
  - Environment
- Public Deliverable D2.1 is available on the AdaptIVe website.

**Deliverable D2.1 //**  
**System Classification and Glossary**

Dissemination level	PU
Version	1.2
Due date	31.12.2014
Version date	06.02.2015

# // Achievement - Legal Aspects



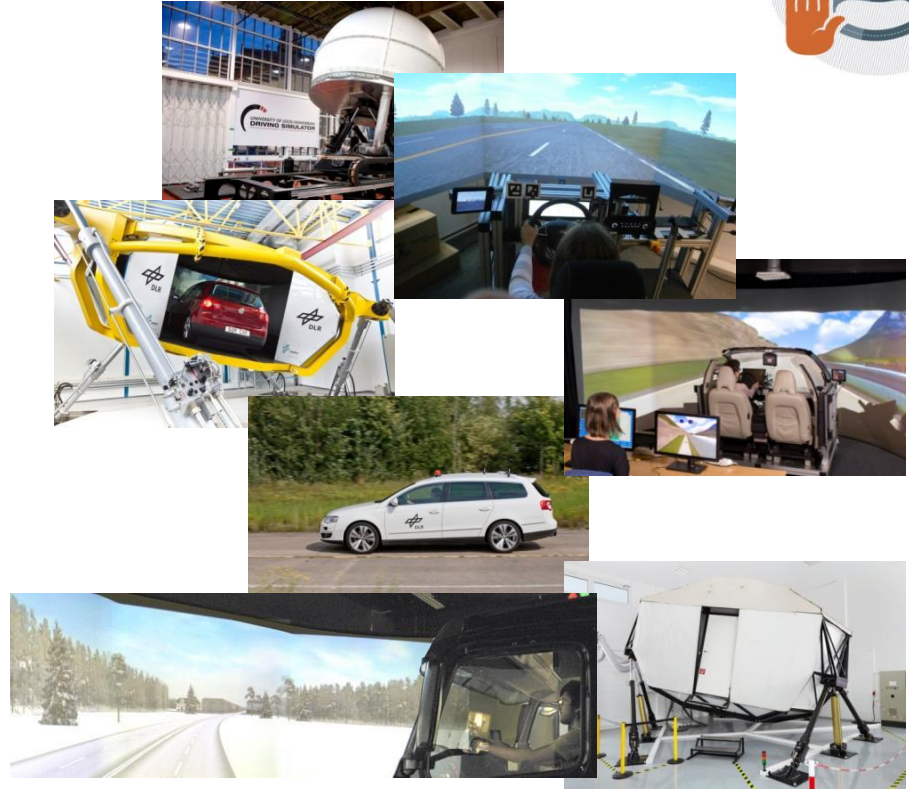
- Defining Legal Aspects:
  - Report on **technical system limits**
  - Internal report on **safety validation**
  - Internal report on **legal aspects**
- Open **Legal Aspects Workshop** in Paris on Sep 17, 2015:
  - Discussing legal topics with external stakeholders and expert community
  - 11 international speakers, 80 experts
  - Presentations and report available on [www.adaptive-ip.eu](http://www.adaptive-ip.eu)



# // Achievement - Human Factors

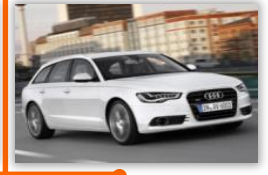
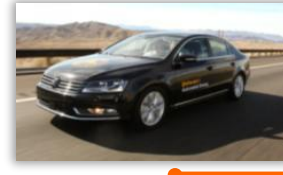


- A total of 17 experiments were conducted
  - Surveys
  - Simulator studies
  - Field studies
- More than 300 drivers and 2700 participants
- Basis for the human factors recommendations





# // Achievement - Demonstrators and Functions



e.g. automated parking,  
parking assistance, ...

e.g. intersections and  
traffic lights, urban  
roundabouts, ...

e.g. cooperative merging,  
predicted driving, ...

minimum risk manoeuvre

## // Next step - Evaluation



- Adaptive considers the evaluation of:
  - **Technical aspects** at different automation levels;
  - **Driver behaviour** as well as interaction with other road users;
  - **Effects on traffic** when automated driving function are deployed
- **New impact assessment methods** will be developed:
  - New accident types which are not available from today's accident statistics
  - Long term exposure
  - Interaction between automated and non-automated traffic (driver behaviour)

## // Next step - Final Event

- Final Event will take place in Aachen, Germany, on June 28-29, 2017.
- Project results will be showcased through driving demonstrations, presentations and exhibition.
- For more information see: <https://adaptive-ip.eu/index.php/events.html>





Co-funded by  
the European Union

Dr. Jens Langenberg  
jens.langenberg1@volkswagen.de

Volkswagen Group Research



**Adapt//Ve**

*Automated Driving Applications and  
Technologies for Intelligent Vehicles*

*Thank you.*



Third party pictures: Fotolia Daddy  
Cool, carmeta, Miredi, Christian  
Müller, Syda Productions, 06Photo,  
kalafoto