



Field Operational Tests

Mobility in the aging society utilizing automated driving

In order to ensure the mobility of people and goods in rural areas with aging populations, automated driving services are strongly anticipated in Japan. A series of pilot project with autonomous cars was started.

Challenges in rural areas

- High aging population among the world

over 65

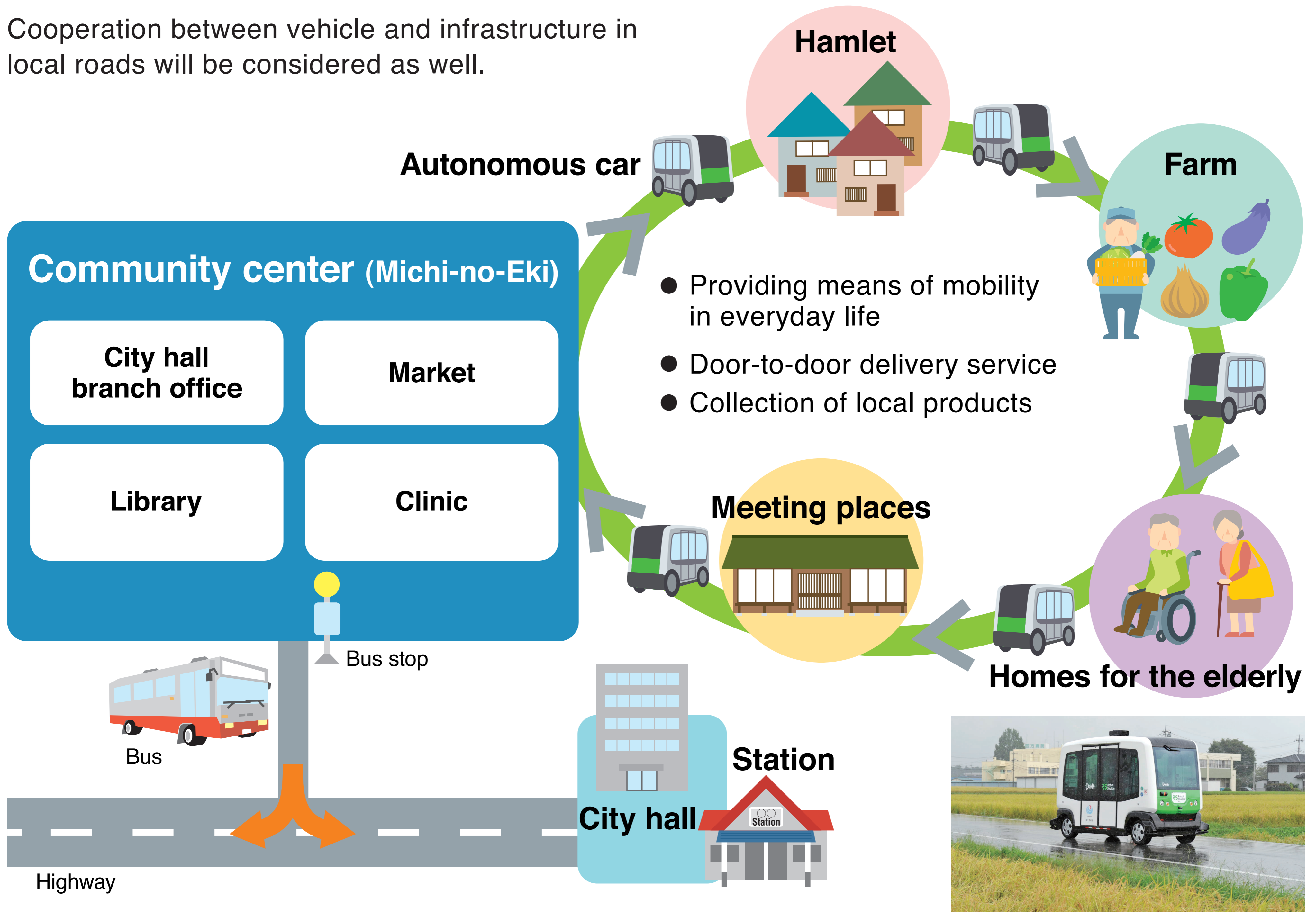
National average
23%

Rural areas
31%

- Sharp increase in the number of elderly people who cannot drive
- Decline in public transport services
- Shortage of drivers for taxis/logistics

Concept of pilot project

Cooperation between vehicle and infrastructure in local roads will be considered as well.



A series of pilot project (13 sites in total) was started in September 2017.