

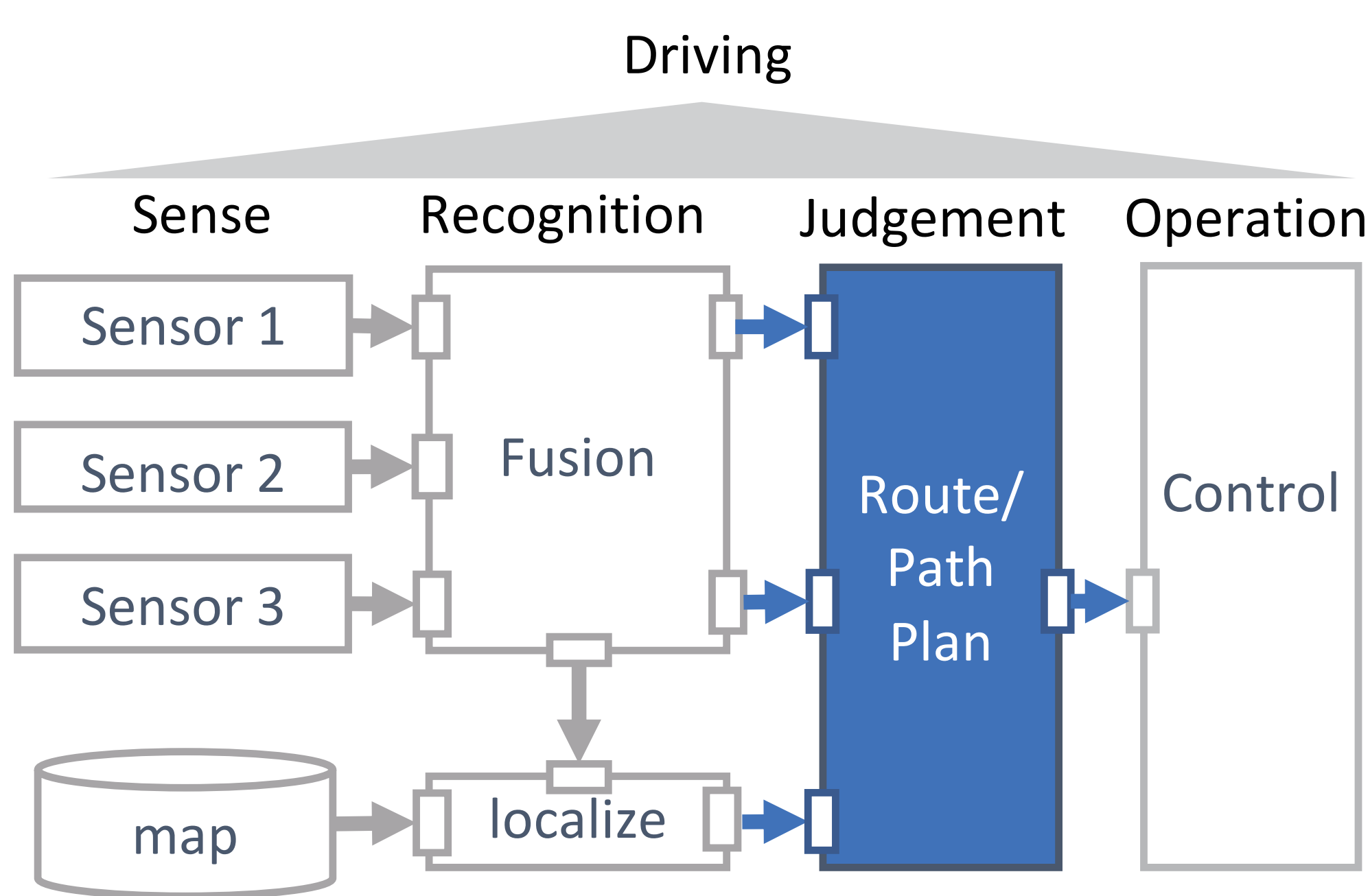
Safety Validation for Automated Driving in Japan



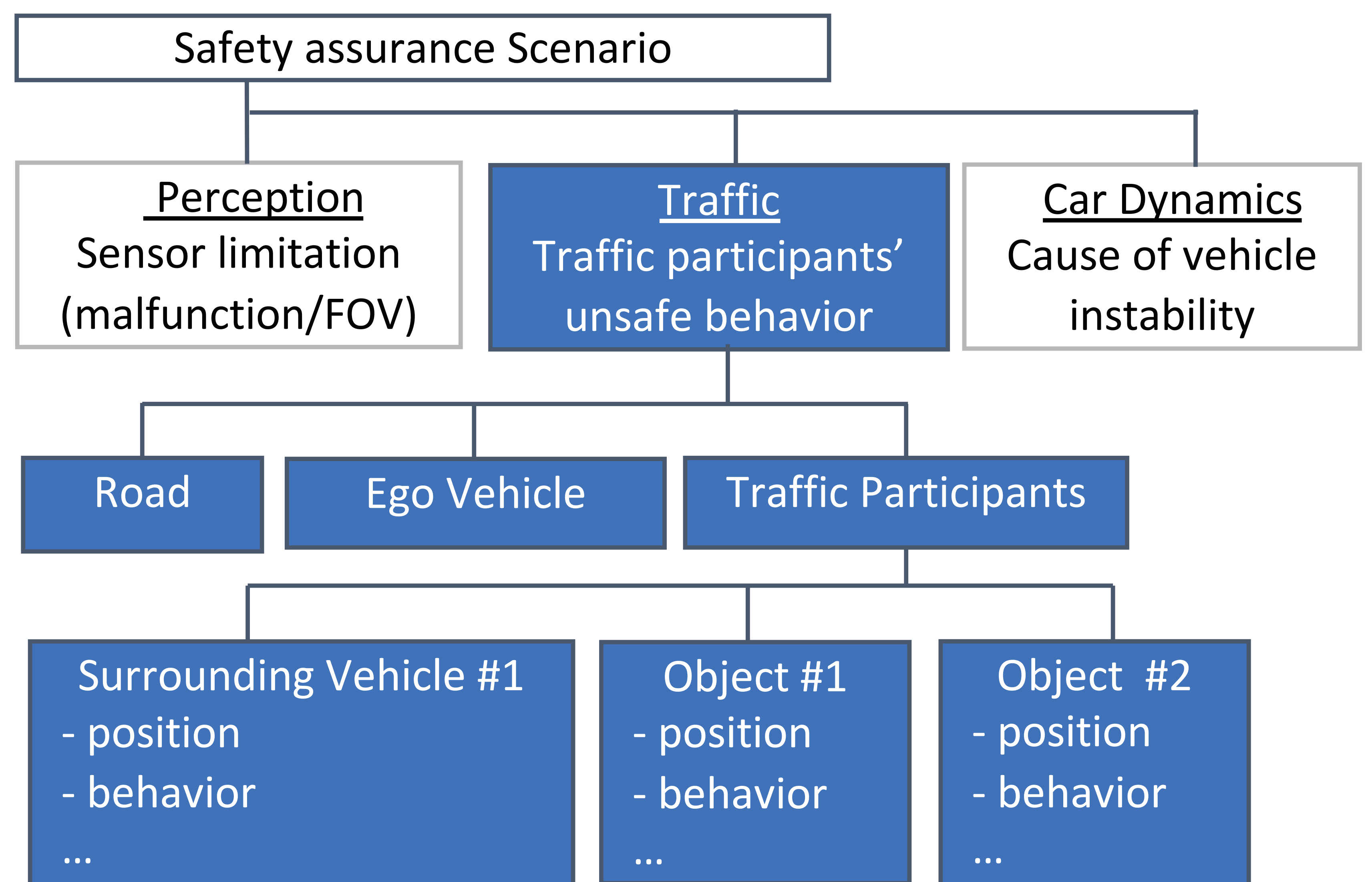
Project detail in each topic

Scenarios in AD Safety Validation

Scenario Structure



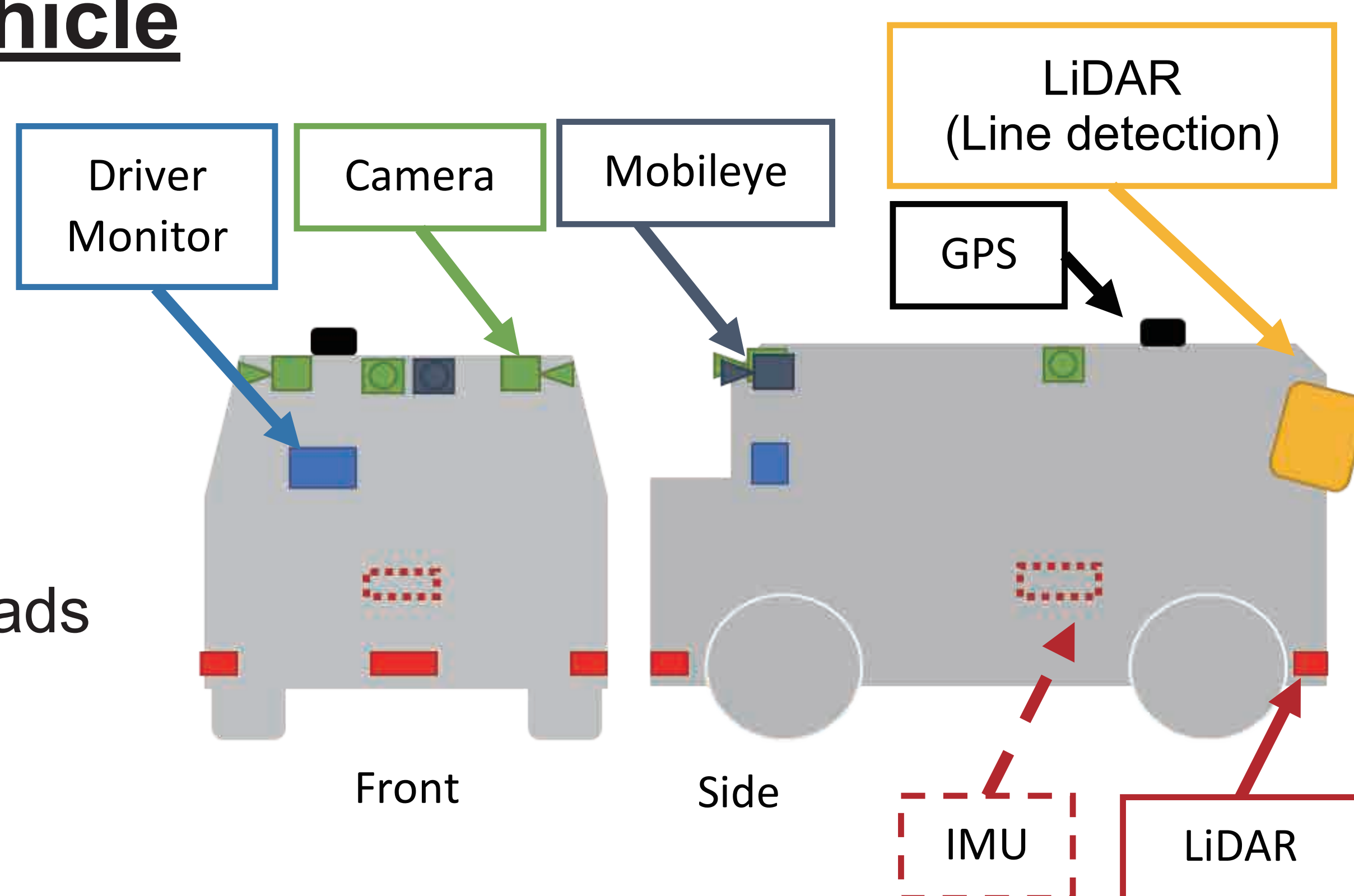
- Project focus point is about judgement related with ODD in AD
- Expert knowledge based scenario definition
- Scenario is described as hierarchy architecture



Driving Data Collection

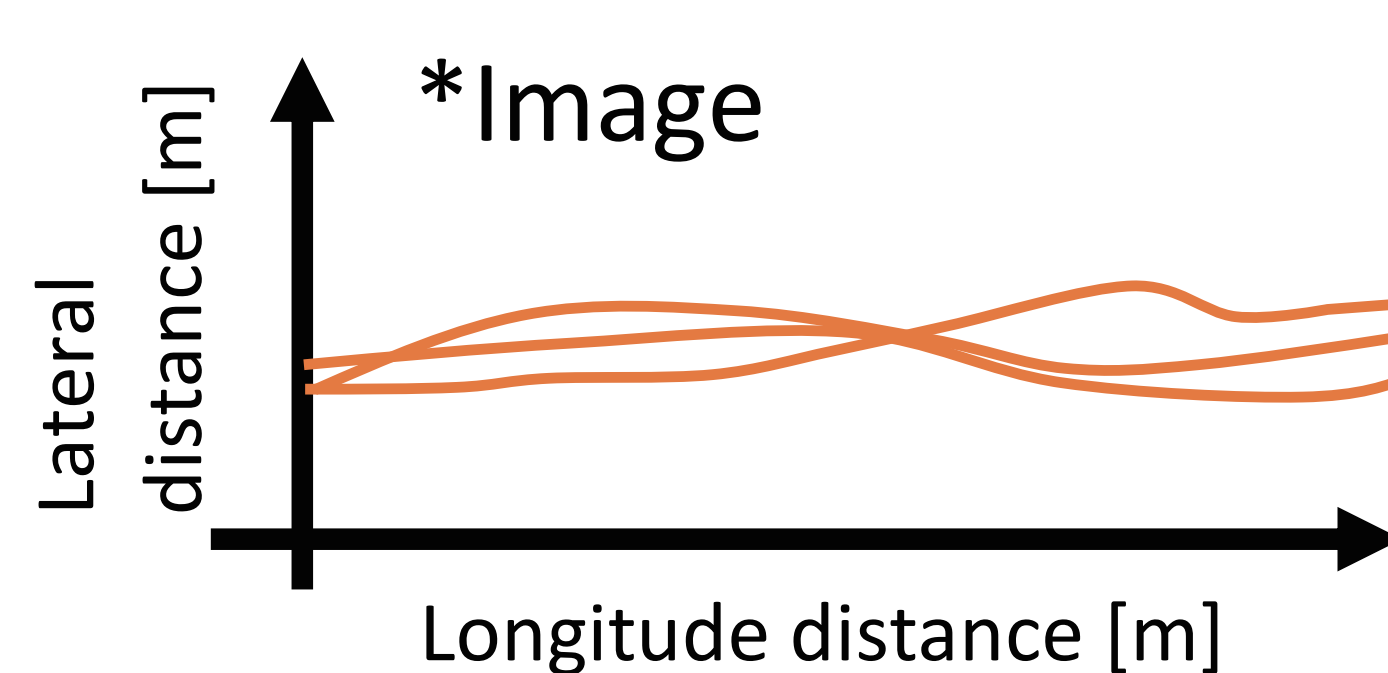
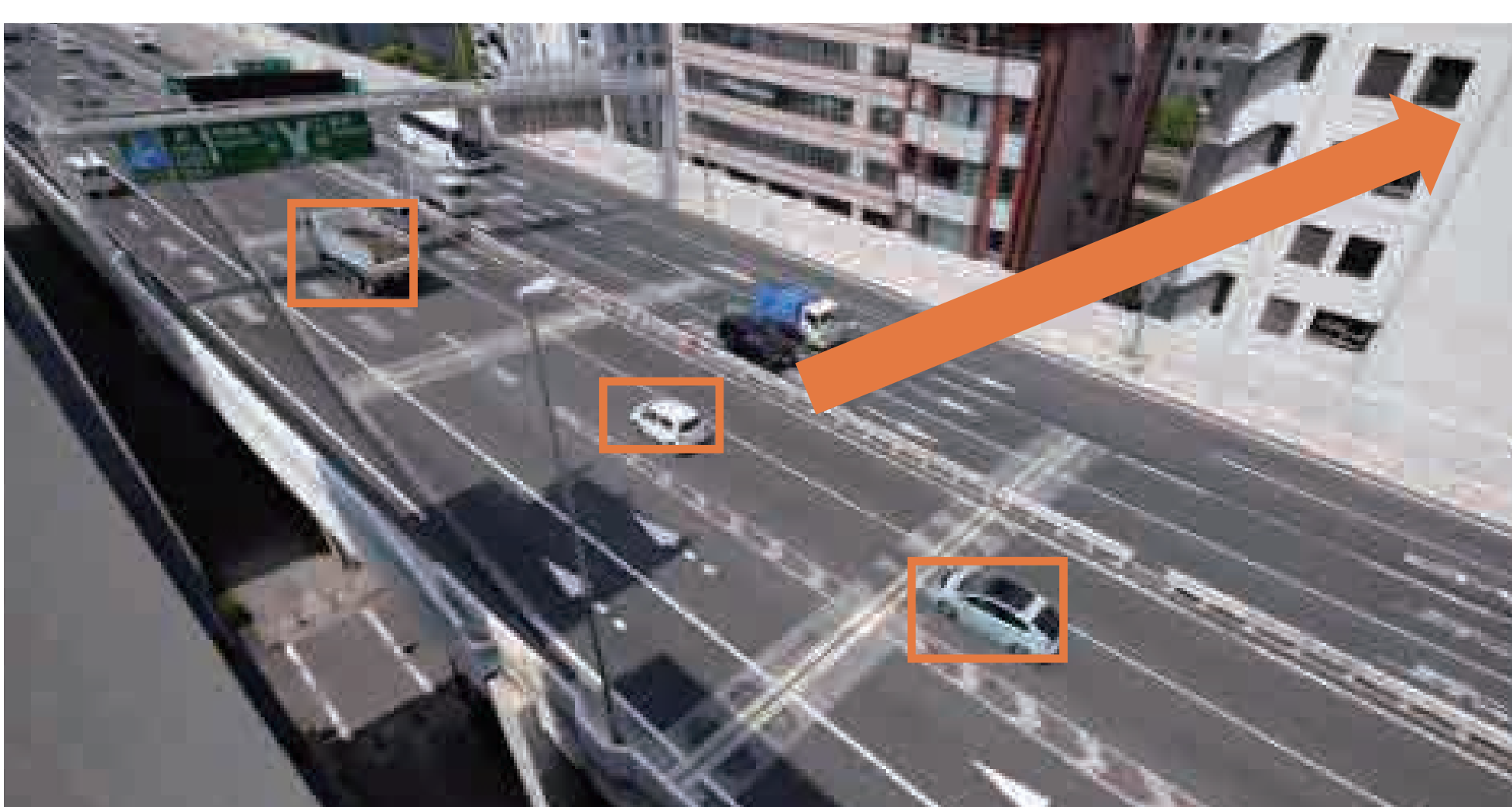
Equipped vehicle

- 3 Vehicles are developed
- Recording 1000 hours data
- Running on Express way roads in Japan



Fixed location camera

*Example image

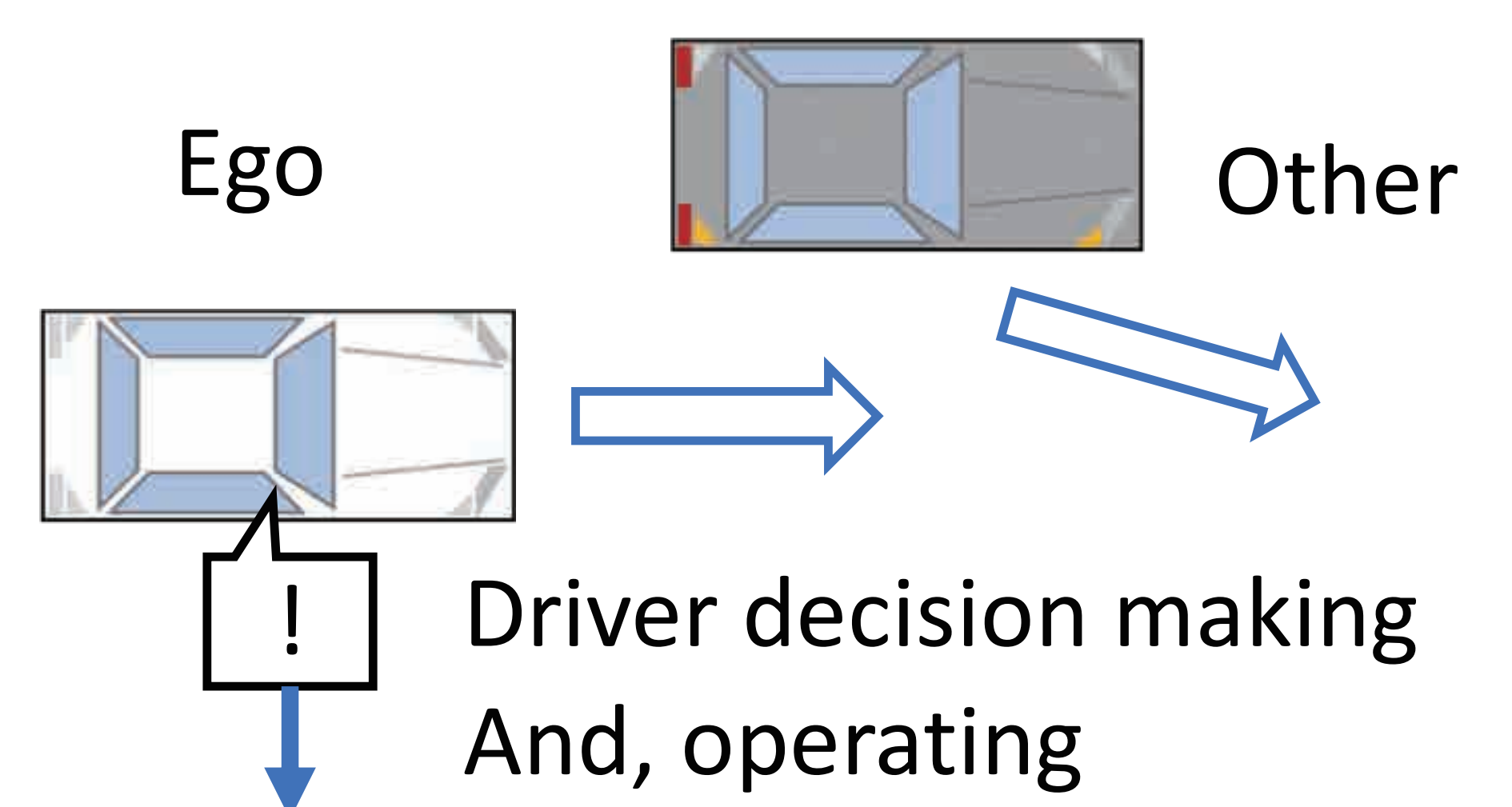


- Vehicle trajectories on complex structure roads are measured

Safety Criteria for AD

How about the difference between expert driver and beginner driver about decision making ?

For Example: Cut - in



- Braking ?
- Steering ?
- or else ... ?

To validate any difference (or not) between expert drivers and beginner drivers on judgement and operation.